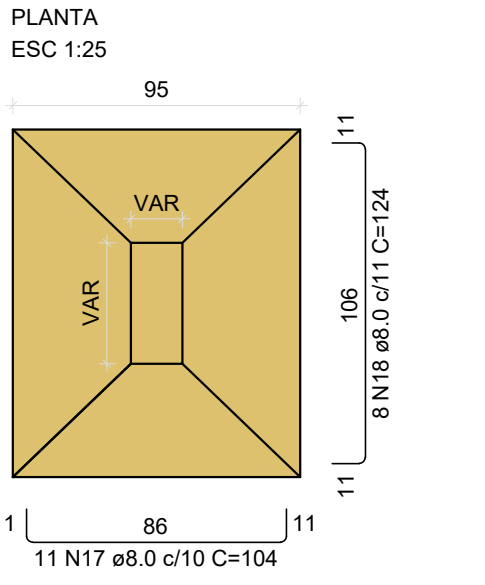
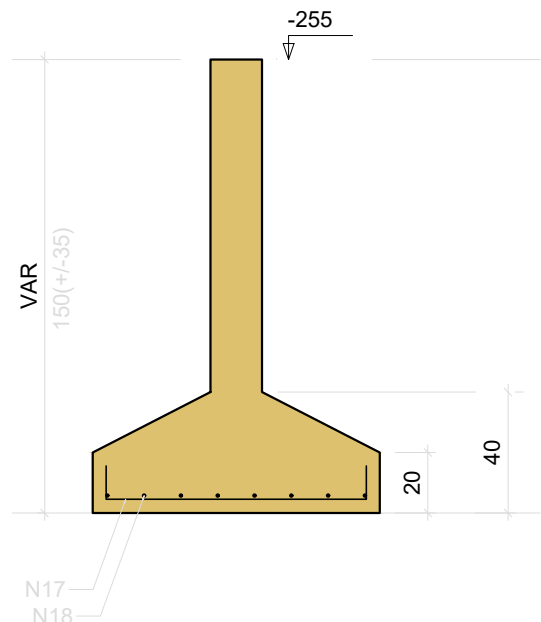


S1=S21=S27=S38=S39=S42

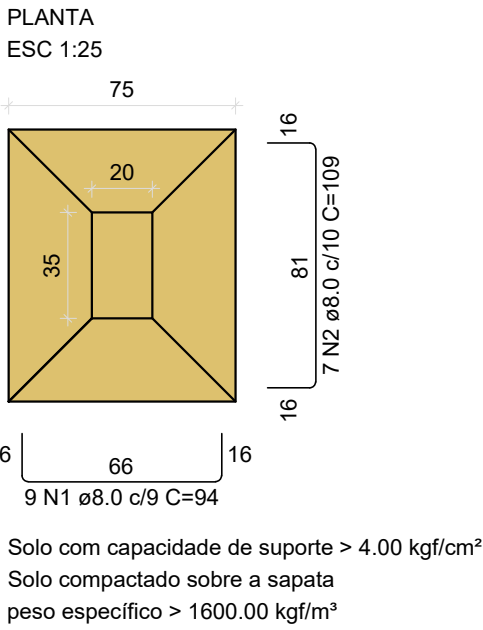


Solo com capacidade de suporte > 4.00 kgf/cm²
Solo compactado sobre a sapata
peso específico > 1600.00 kgf/m³

CORTE
ESC 1:25

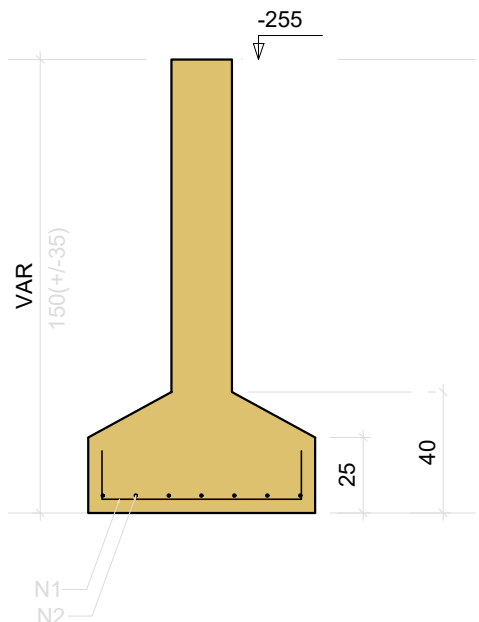


S2=S3

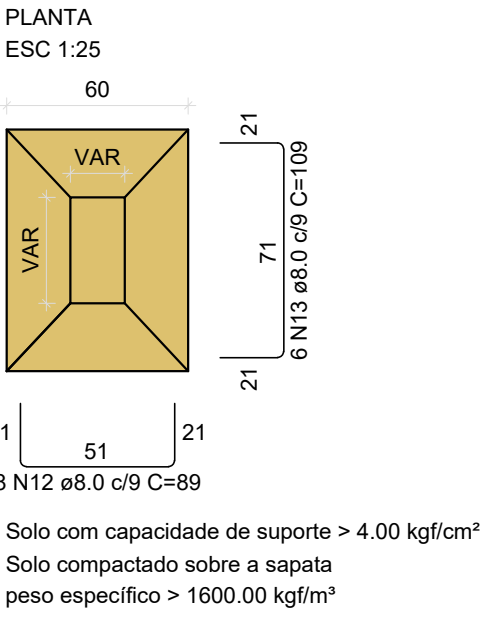


Solo com capacidade de suporte > 4.00 kgf/cm²
Solo compactado sobre a sapata
peso específico > 1600.00 kgf/m³

CORTE
ESC 1:25

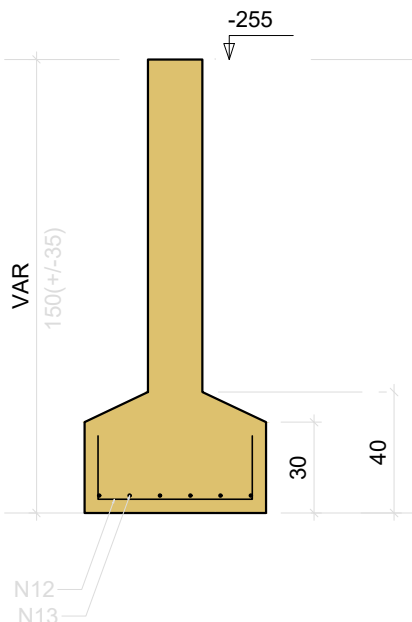


S4=S8=S14

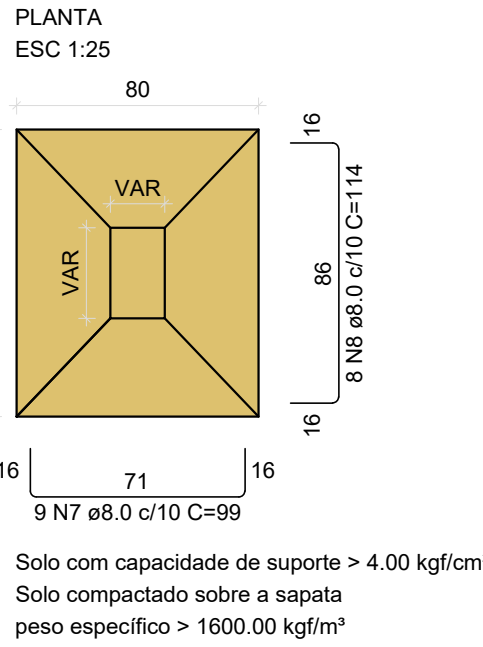


Solo com capacidade de suporte > 4.00 kgf/cm²
Solo compactado sobre a sapata
peso específico > 1600.00 kgf/m³

CORTE
ESC 1:25

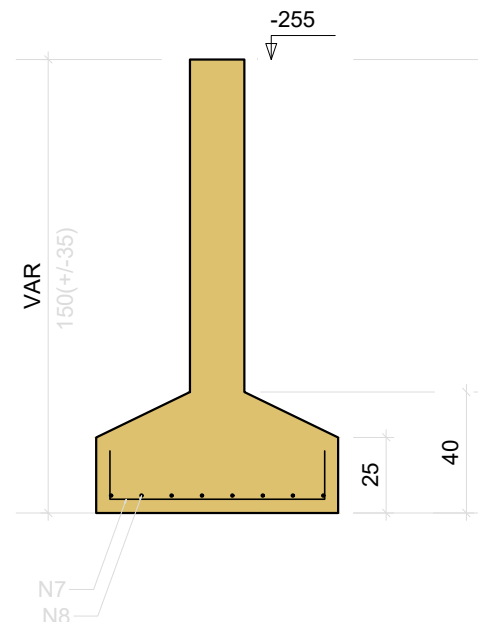


S5=S11=S45

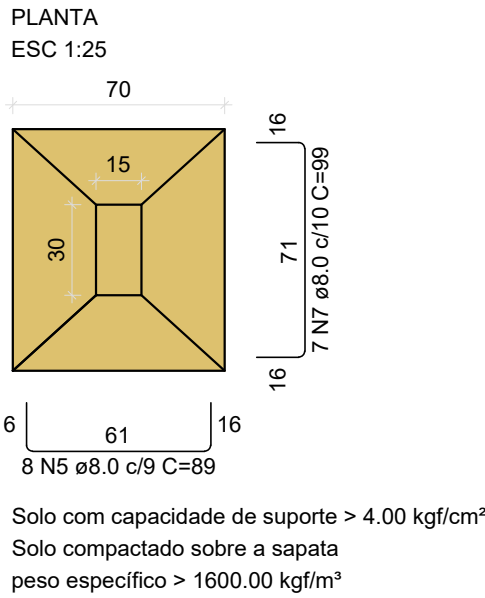


Solo com capacidade de suporte > 4.00 kgf/cm²
Solo compactado sobre a sapata
peso específico > 1600.00 kgf/m³

CORTE
ESC 1:25

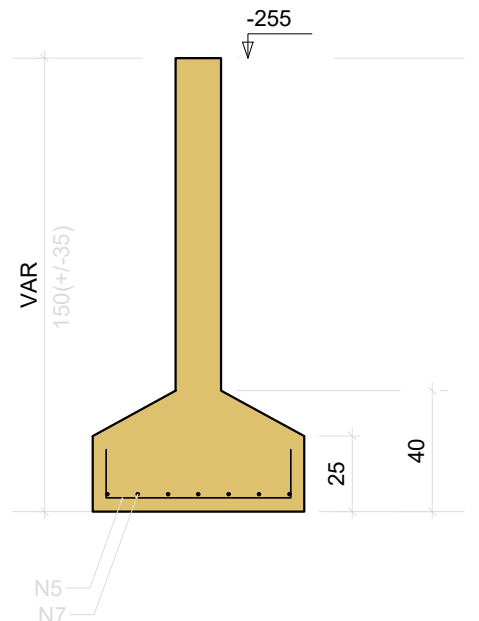


S6=S32

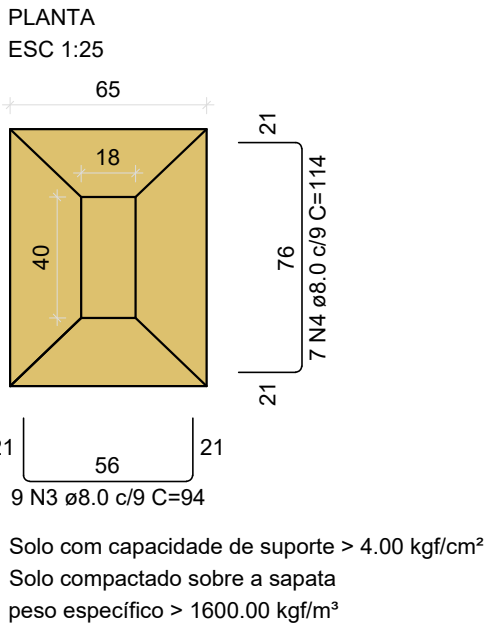


Solo com capacidade de suporte > 4.00 kgf/cm²
Solo compactado sobre a sapata
peso específico > 1600.00 kgf/m³

CORTE
ESC 1:25

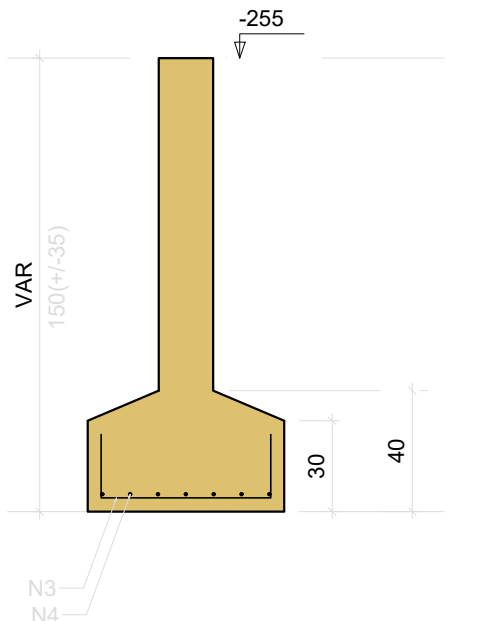


S7

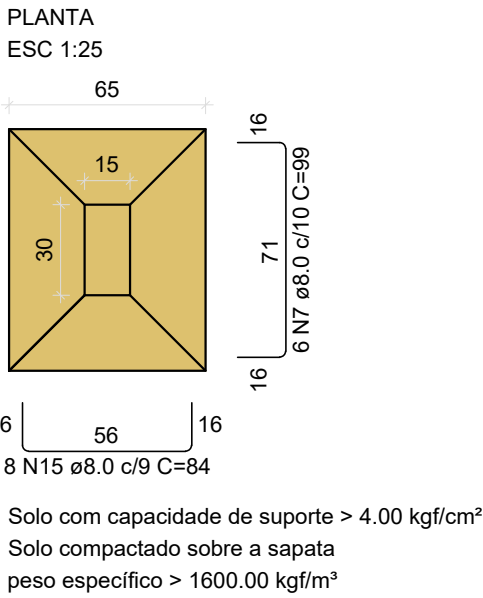


Solo com capacidade de suporte > 4.00 kgf/cm²
Solo compactado sobre a sapata
peso específico > 1600.00 kgf/m³

CORTE
ESC 1:25

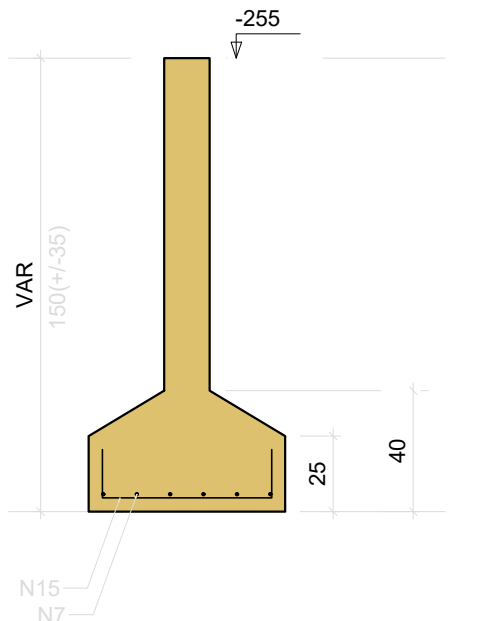


S9=S17=S18=S34

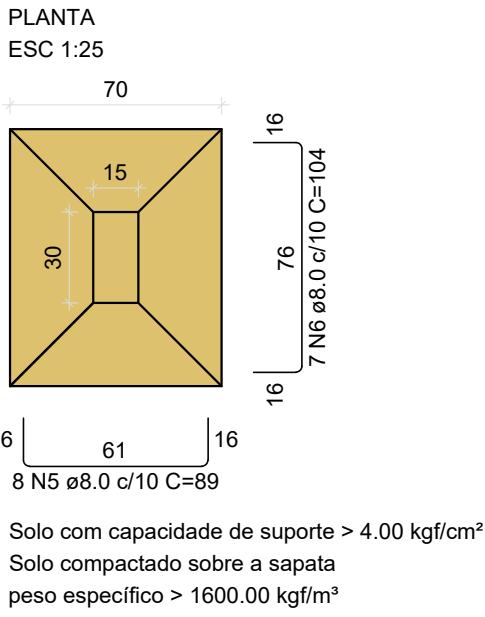


Solo com capacidade de suporte > 4.00 kgf/cm²
Solo compactado sobre a sapata
peso específico > 1600.00 kgf/m³

CORTE
ESC 1:25

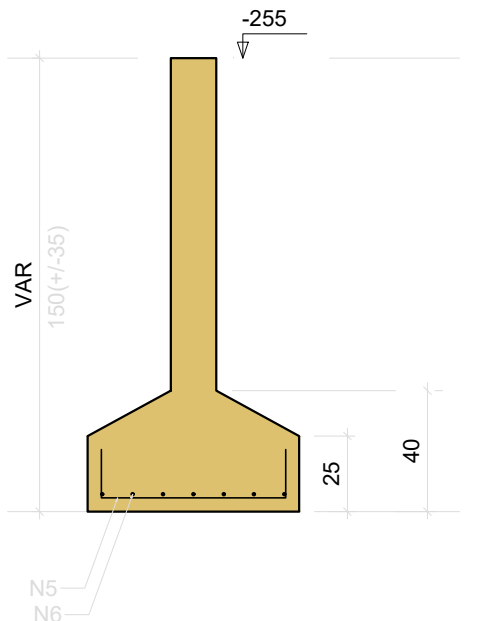


S10=S25=S36=S37=S40=S58

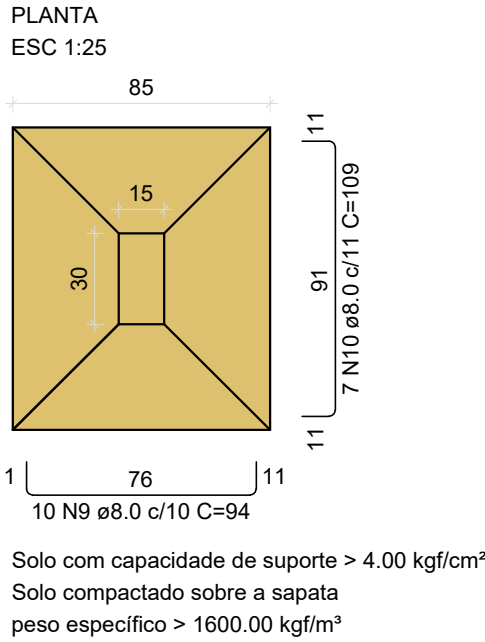


Solo com capacidade de suporte > 4.00 kgf/cm²
Solo compactado sobre a sapata
peso específico > 1600.00 kgf/m³

CORTE
ESC 1:25

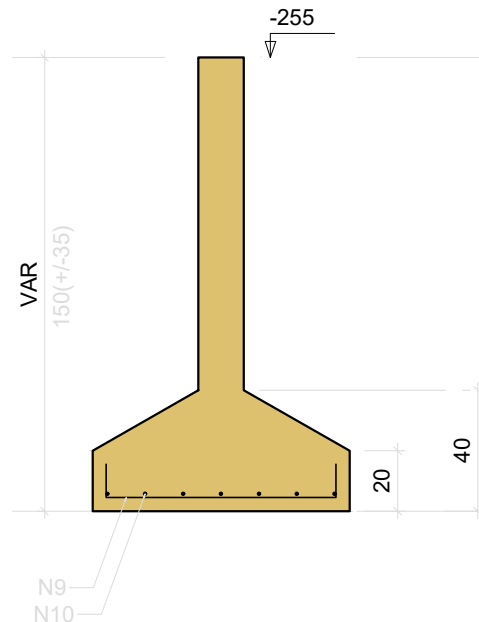


S12=S33=S48

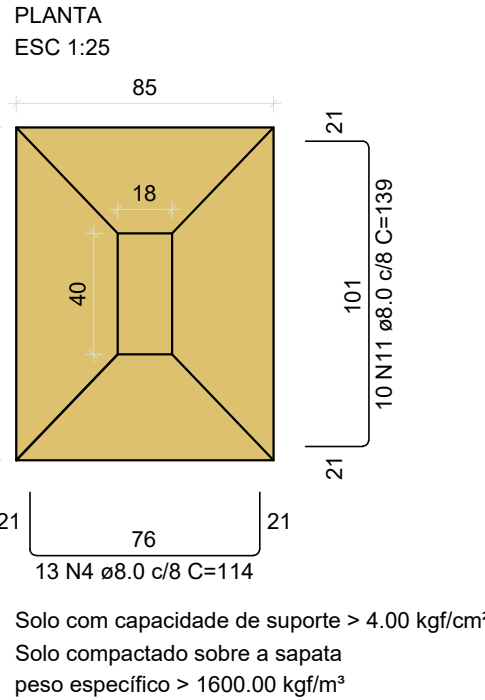


Solo com capacidade de suporte > 4.00 kgf/cm²
Solo compactado sobre a sapata
peso específico > 1600.00 kgf/m³

CORTE
ESC 1:25

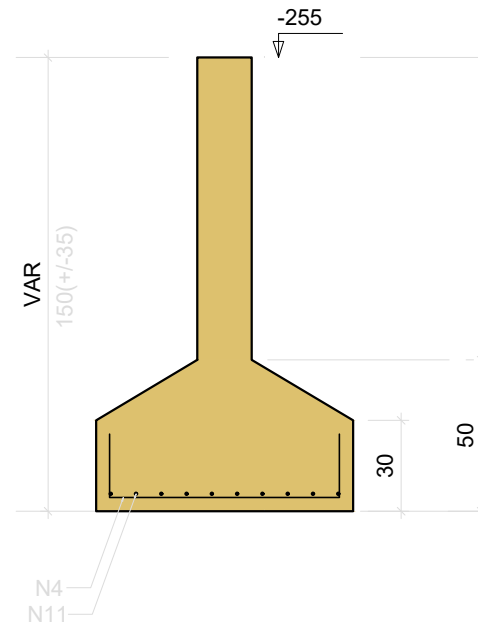


S13

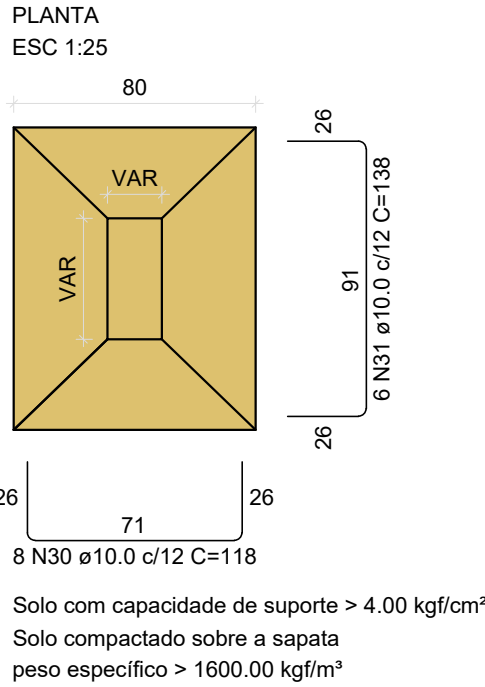


Solo com capacidade de suporte > 4.00 kgf/cm²
Solo compactado sobre a sapata
peso específico > 1600.00 kgf/m³

CORTE
ESC 1:25

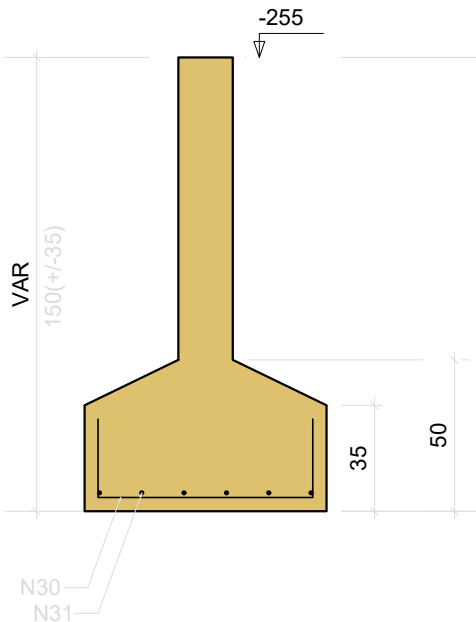


S15=S23=S51=S53

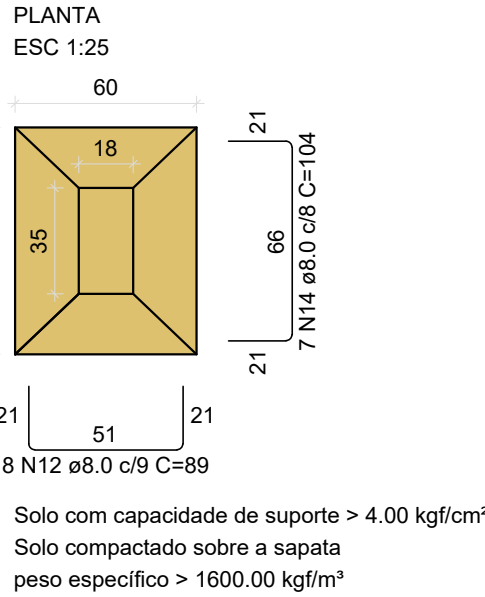


Solo com capacidade de suporte > 4.00 kgf/cm²
Solo compactado sobre a sapata
peso específico > 1600.00 kgf/m³

CORTE
ESC 1:25

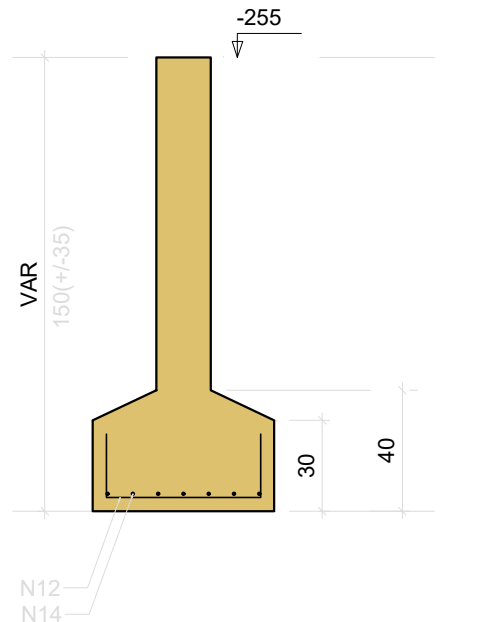


S16

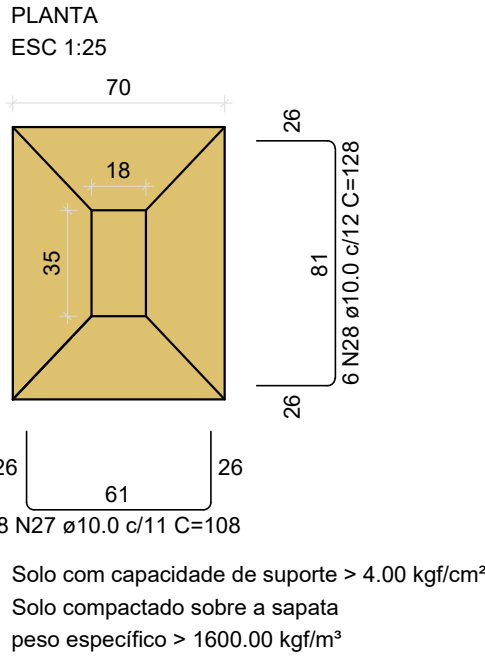


Solo com capacidade de suporte > 4.00 kgf/cm²
Solo compactado sobre a sapata
peso específico > 1600.00 kgf/m³

CORTE
ESC 1:25

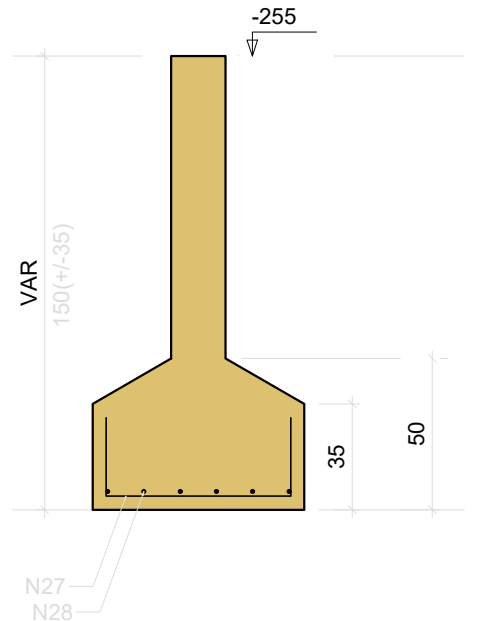


S19

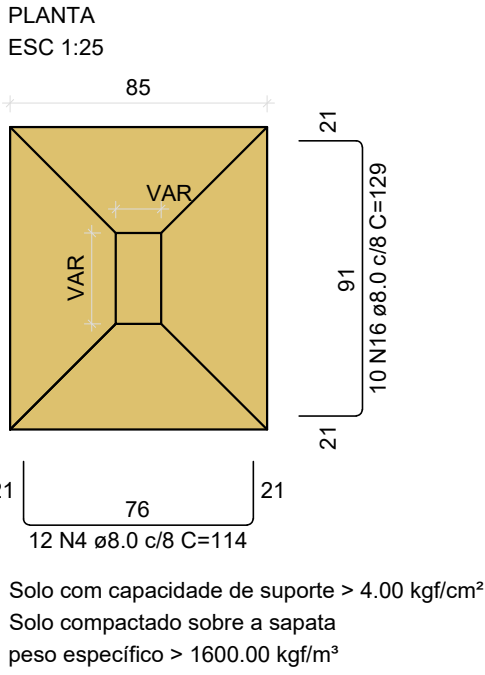


Solo com capacidade de suporte > 4.00 kgf/cm²
Solo compactado sobre a sapata
peso específico > 1600.00 kgf/m³

CORTE
ESC 1:25

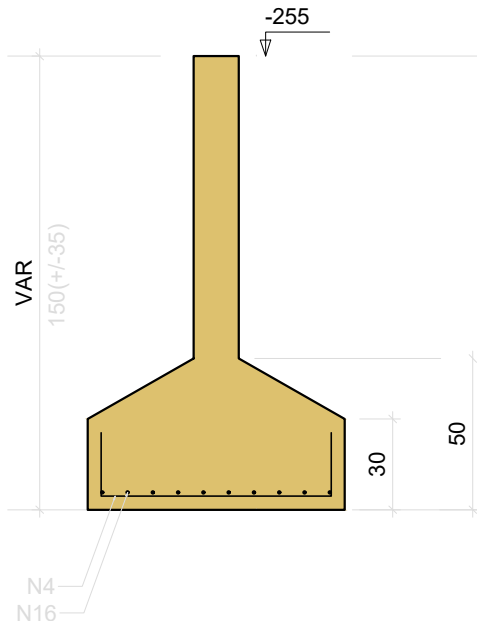


S20=S54

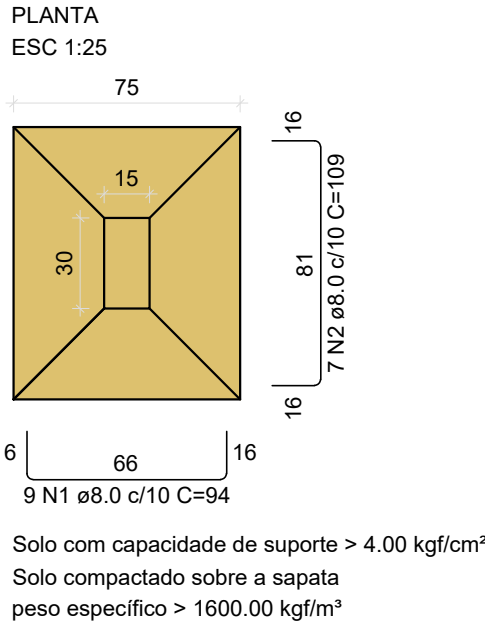


Solo com capacidade de suporte > 4.00 kgf/cm²
Solo compactado sobre a sapata
peso específico > 1600.00 kgf/m³

CORTE
ESC 1:25

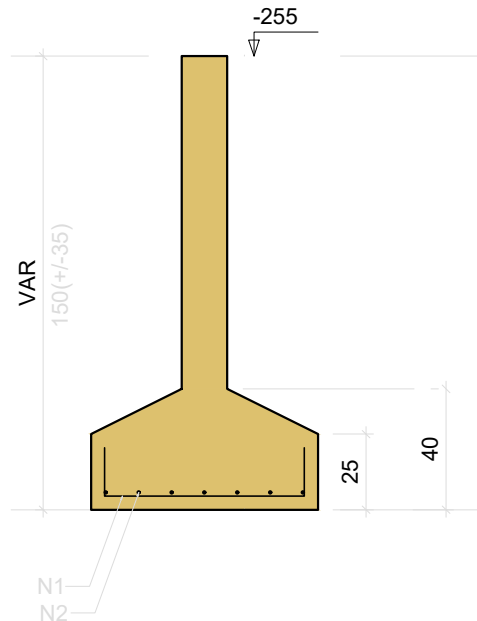


S24=S26=S55

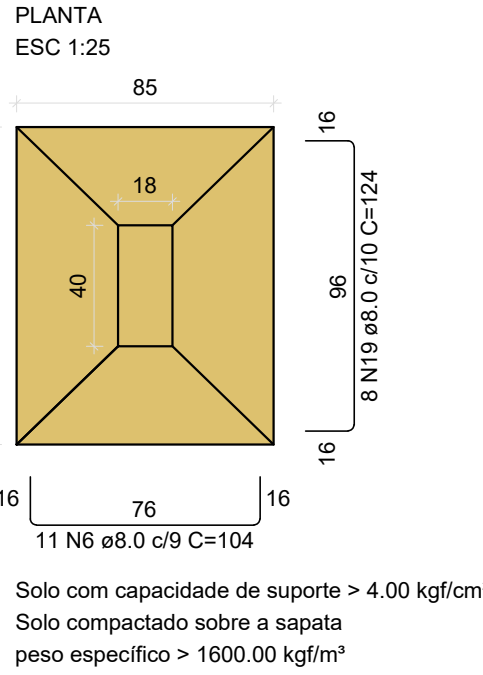


Solo com capacidade de suporte > 4.00 kgf/cm²
Solo compactado sobre a sapata
peso específico > 1600.00 kgf/m³

CORTE
ESC 1:25

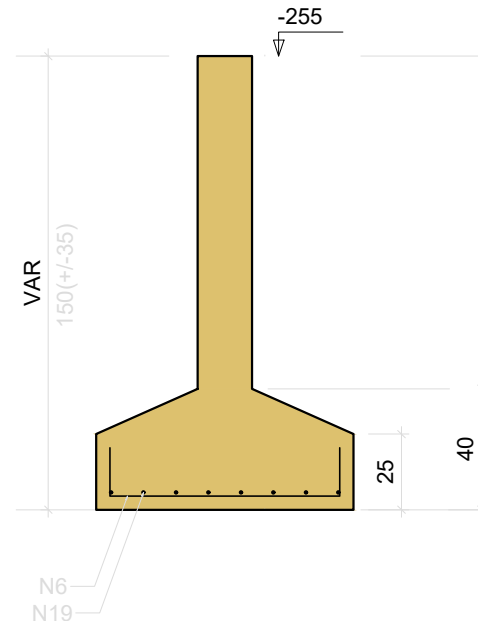


S28

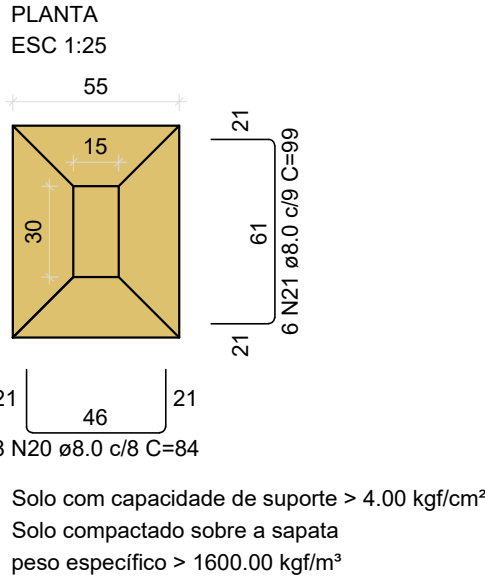


Solo com capacidade de suporte > 4.00 kgf/cm²
Solo compactado sobre a sapata
peso específico > 1600.00 kgf/m³

CORTE
ESC 1:25

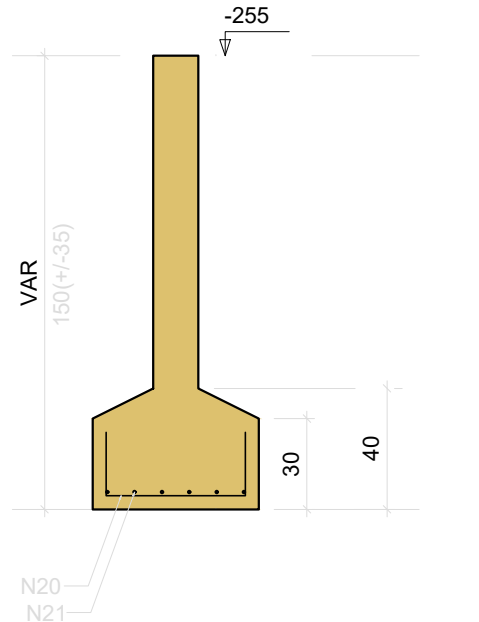


S29

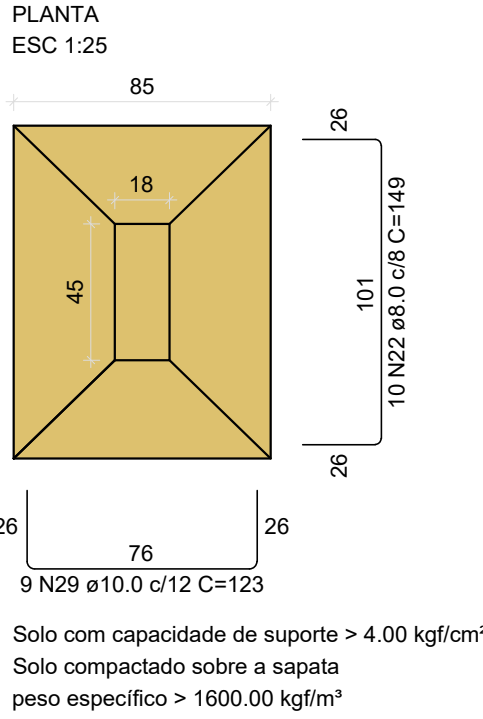


Solo com capacidade de suporte > 4.00 kgf/cm²
Solo compactado sobre a sapata
peso específico > 1600.00 kgf/m³

CORTE
ESC 1:25

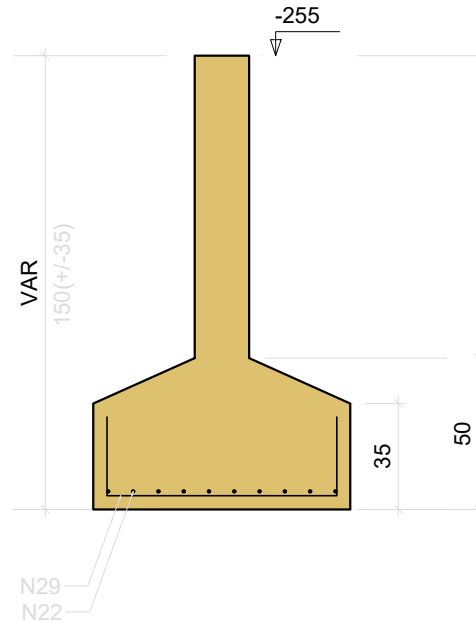


S30

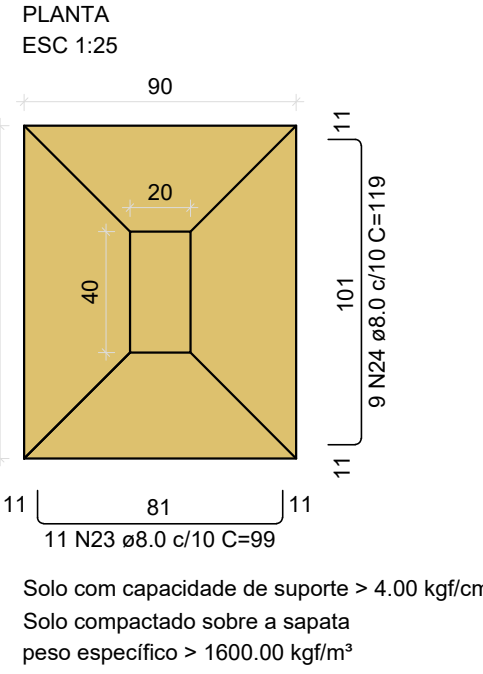


Solo com capacidade de suporte > 4.00 kgf/cm²
Solo compactado sobre a sapata
peso específico > 1600.00 kgf/m³

CORTE
ESC 1:25

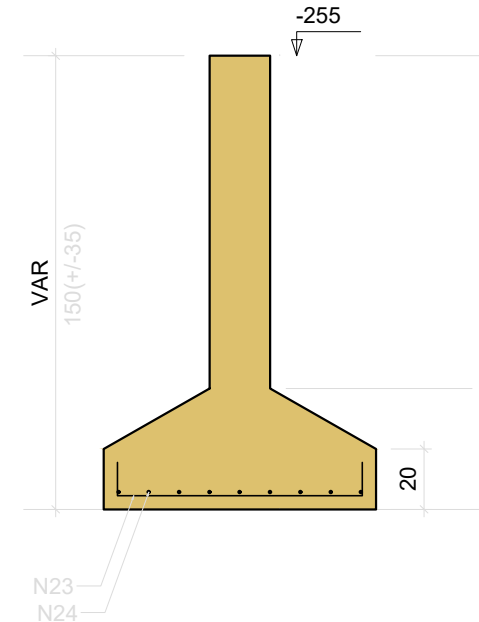


S31

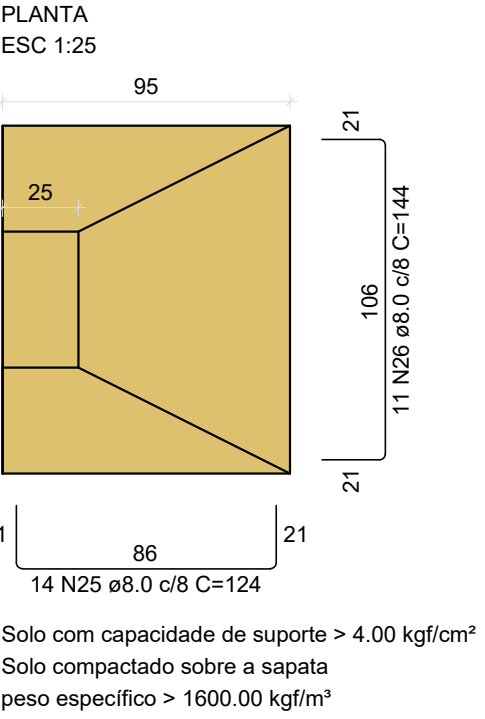


Solo com capacidade de suporte > 4.00 kgf/cm²
Solo compactado sobre a sapata
peso específico > 1600.00 kgf/m³

CORTE
ESC 1:25

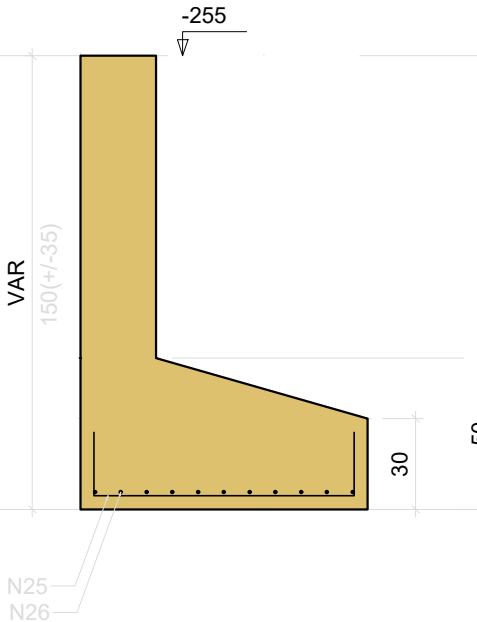


S35=S44



Solo com capacidade de suporte > 4.00 kgf/cm²
Solo compactado sobre a sapata
peso específico > 1600.00 kgf/m³

CORTE
ESC 1:25



RELAÇÃO DO AÇO					
2xS2	S7	6xS10			
3xS11	3xS12	S13			
3xS14	S16	4xS17			
S18	2xS20	6xS21			
3xS24	S28	S29			
S30	S31	2xS32			
2xS35	4xS53				
AÇO	N	DIAM (mm)	QUANT	C.UNIT (cm)	C.TOTAL (cm)
CA50	1	8.0	45	94	4230
	2	8.0	35	109	3815
	3	8.0	9	94	846
	4	8.0	44	114	5016
	5	8.0	64	89	5696
	6	8.0	53	104	5512
	7	8.0	65	99	6435
	8	8.0	24	114	2736
	9	8.0	30	94	2820
	10	8.0	21	109	2289
	11	8.0	10	139	1390
	12	8.0	32	89	2848
	13	8.0	18	109	1962
	14	8.0	7	104	728
	15	8.0	32	84	2688
	16	8.0	20	129	2580
	17	8.0	66	104	6864
	18	8.0	48	124	5952
	19	8.0	8	124	992
	20	8.0	8	84	672
	21	8.0	6	99	594
	22	8.0	10	149	1490
	23	8.0	11	99	1089
	24	8.0	9	119	1071
	25	8.0	28	124	3472
	26	8.0	22	144	3168
	27	10.0	8	108	864
	28	10.0	6	128	768
	29	10.0	9	123	1107
	30	10.0	32	118	3776
	31	10.0	24	138	3312

RESUMO DO AÇO			
AÇO	DIAM (mm)	C.TOTAL (m)	PESO + 10% (kg)
CA50	8.0 10.0	769.6 98.3	334 66.6
PESO TOTAL (kg)			
CA50	400.7		
Volume de concreto (C-25) = 12.01 m³ Área de forma = 43.69 m²			

BLOCO DA DELEGACIA PRANCHAS DE: 296 a 348

REVISÃO	DESCRIÇÃO	REVISADO POR	DATA
REVISÃO 00	EMIÇÃO INICIAL	WAGNER	MARÇO/2024

SECRETARIA DE ESTADO DA SEGURANÇA PÚBLICA			DIRETORIA DE ARQUITETURA E EDIFICAÇÕES FRAÇÃO TOBIAS BARRETO, nº 20, BARRIO SÃO JOSÉ CEP: 49050-220 ARACAJU/SE TELS: (79)3216-5454 / (79)98851-9337
TIPOPROJETO ESTRUTURAL EXECUTIVO DA CONSTRUÇÃO DO CENTRO INTEGRADO DE SEGURANÇA PÚBLICA (CISP) EM NOSSA SENHORA DA GLÓRIA/SE			Nº DA PRANCHA
ASSUNTO: BLOCO DA DELEGACIA SAPATAS 01			298/348
END.: RUA ANTÔNIO JOAQUIM DE FARIAS, S/N – N. SRA DA GLÓRIA – SE			
AUTOR DO PROJETO: WAGNER DARY DA SILVA			
RESPONSÁVEL TÉCNICO: WAGNER DARY DA SULVA RN: 270771497-6			
ESCALA: INDICADO	DATA: MARÇO/2024	DESENHISTA: WAGNER DARY DA SILVA	